

HEM PAVING

SIMPLY GREAT MACHINES

14-37 Slip Form Paver



Individual Solutions for all Your Paving Needs

www.hempaving.com • info@hempaving.com

319-824-3011

HEAVY EQUIPMENT MFG • 601 E FIRST ST • GRUNDY CENTER, IA 50638



Optional Center Bar Inserters



Optional Water Fogging Bar

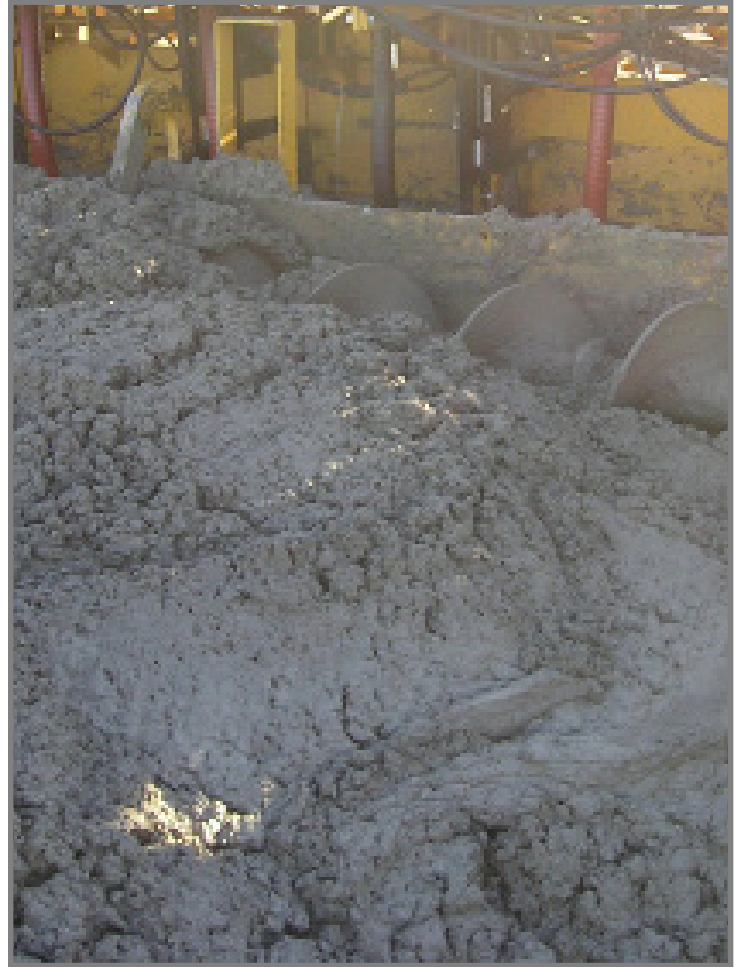


Optional Equipment (not included in base machine)

- Poly Pads
- Additional Complete Frame Extension Assemblies
- Additional Hydraulic Vibrators
- Curb Molds Built to Customer Specifications
- Male Side Form Key
- Hydraulic Center Bar Inserter with Electronic Indicator
- Hydraulic Side Bar Inserter with Electronic Indicator
- Hydraulic Oscillating Rear Belt Finisher
- Hydraulic Curb Shut-Off for Curb Molds
- Curb Shut-Off for Curb Molds
- Belt Conveyor for Unloading Transit Mixer Off-Grade
- Sensor for Reverse Steering and Travel
- Water Fogging Bar (for watering burlap)
- Additional 8 Port Vibrator Manifold
- 4 Point Outrigger Lift
- Hydraulic Oscillating Auto Float
- Hydraulic Edge Slump Control (in lieu of manual)
- Metal Keyway Former and Punch Assembly
- Optional Track Lengths and Width



Optional Belt Finisher



Optional Auto Float



Standard Specifications for HEM 14-37 Slip Form Paver

Turbocharged Diesel Engine -

325 hp (250 kW) Tier III
enclosed engine compartment
engine sound proofing

Hydraulic Oil Reservoir 231 gallon (874 liter)

Fuel Reservoir 148 gallon (560 liter)

2 Hydraulic System Heat Exchangers with electric fan

20 Hydraulic Vibrators

vertical adjustment controlled from operator platform
individual or en-masse vibrator speed controls
automatic shut-off with machine travel
maximum flow 4 gallon (15.14 liter) per minute
normal operating pressure 800 - 1300 psi

20 Hydraulic Vibrator Circuits

with individual variable controls
pressure compensated
Hydraulic Pump System
(3) triple stage hydraulic pumps
one pressure relief manifold for convenient pressure
monitoring and pressure adjustments

Two Crawler Tracks

length: 14 ft (4.27 m)
width: 14 inches (35.56 cm)
6 inch (15.2 cm) pitch - triple grouser shoes
101:1 gear reduction
sealed, lifetime lubricated rollers

14 ft - 37 ft (4.26 m - 11.27 m) Paving Width

14 ft (4.26 m) main frame (minimum width)
additional paving width to 45 ft (13.72 m) is optional

Paving Pans

bolt-together sections to fit any slab 14 ft - 37 ft
(4.26 m - 11.27 m) by 6 inch (15 cm) increments
3/8 inch thick x 18 inch high x 52 inch long
(9 mm thick x 45 cm high x 132 cm long)
power crown "on-the-go" for uninterrupted paving through
transitions and intersections
tamper and vibrator rack follow vertical movement of pans
hydraulic power crown controlled from operator console
crown gauge indicator
curb mold inserts for right and/or left side
8 inch (20.3 cm) trailing pan extensions with vertical
stabilizers at 1 foot (30.5 cm) intervals for fine adjustment
and rigidity

Hydraulically Powered Split Tamper Bar System

adjustable tamping depth
variable speed
double bar system

Hydraulically Adjustable Side Forms

6 way hydraulic adjustment
split 30 inch (76 cm) high side forms - folding inward for
transport
side forms attach to the main frame of the machine, not
tracks
18 inch (45 cm) vertical stroke,
4 inch (10 cm) horizontal stroke
adjustable edge slump control
hydraulically controlled from ground and operators platform

Spreader Auger System

16 inch (41 cm) diameter, split reversible, heavy duty augers,
variable speed
planetary drives
augers are adjustable for height
augers drives are shielded from wet concrete
quick disconnect for width changes

Hydraulic Strike-Off

hydraulically controlled strike-off plates
individual controls for variable crown paving

Grade Control System

4 hydraulic stringline sensors
automatic and manual control from operator's platform
system works with two string lines, or "lock to grade"

Steering System

1 hydraulic stringline sensor
steer from right or left hand side of machine
automatic and manual steering, controlled from operator's
platform

Power Wash System

(2) 110 gallon (416 liter) water tanks
2000 psi, 4 gallon (15 liter) per minute hydraulic power wash
pump
25 ft (7.6 m) high pressure hose and wand

Intermittent Shut-Down System

single switch operation
electronic over hydraulic
controls all critical functions of machine:
grade, travel, tamper, vibration, belt finisher

Operator's Platform

hydraulic system pressure gauges: grade, travel, vibrator,
tamper, auger
hydraulic controls: travel, vibrator, tamper, pressure wash,
strike-off, auger, grade
high visibility "wrap around" console
engine controls and monitoring devices mounted on console
safety railing
engineered for easy monitoring of all machine functions
canopy

Transport Dimensions

width: 14 ft (4.26 m)
length: paving width plus 4 ft (1.2 m)
2 ft (60 cm) each side for track and end frame

Specifications & Materials Subject to change.