



SLIP FORM PAVERS

SLIP FORM PAVERS



THE RIGHT PAVER FOR ANY JOB

SFP 8-15



SFP 10-17



SFP 12-27



SFP 14-37



SFP 8-16H



SFP 12-28H



SFP 14-40H



SFP 12-27 SLIP FORM PAVER

STANDARD SPECIFICATIONS

OPTIONAL EQUIPMENT AVAILABLE

Engine: 240 HP

- Caterpillar
- Cummings
- John Deere

16 Hydraulic Vibrators

16 Hydraulic Vibrator Circuits

Hydraulic Pump System

- (2) triple stage hydraulic pumps
- (1) double stage hydraulic pump

Two Crawler Tracks

- length: 3.65 m
- width: 30 cm

Paving Pans

- bolt-together sections to allow for paving
- 3.65 - 8.2 m by 15 cm increments
- power crown “on-the-go” for uninterrupted paving
- Curb mold inserts for right and/or left side

also available:

STANDARD PAVERS

- SFP 8-15
- SFP 10-17
- SFP 14-37

HIGH PROFILE PAVERS

- SFP 8-16 H
- SFP 12-28 H
- SFP 14-40 H



SFP 12-27 SLIP FORM PAVER

STANDARD SPECIFICATIONS

OPTIONAL EQUIPMENT AVAILABLE

PAGE 2 OF 2

Hydraulically Adjustable Side Forms

Spreader Auger System

- 41 cm diameter,
- planetary drives
- adjustable for height

Grade Control System

- 4 hydraulic stringline sensors
- system works with two string lines, or “lock to grade”



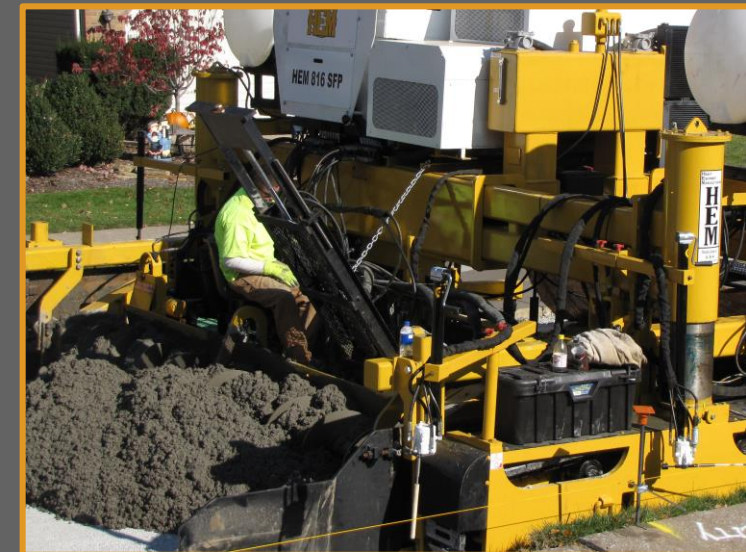
SLIP FORM PAVER OPTIONS

CENTER BAR INSERTER



Hydraulic Center Bar Inserters with
Electronic Indicator

For insertion of straight bars into longitudinal joints.



SIDE BAR INSERTER



**Hydraulic Side Bar Inserter
with Electronic Indicator**

For insertion of straight or 90° bars into edge of slab.

HYDRAULIC OSCILLATING REAR BELT FINISHER



Hydraulic Oscillating Rear Belt Finisher with variable speed control

- 14 inch (35cm) wide rubber belt
- Adjustable winch tensioner

HYDRAULIC OSCILLATING

AUTO FLOAT



Hydraulic Oscillating Auto Float

- Variable transverse oscillation speed
- Variable fore-aft oscillation speed
- Crownable
- 8 foot (2.43m) stainless steel float pan

ADDITIONAL SLIP FORM PAVER - OPTIONS

NOT INCLUDED IN BASE MACHINE

- Poly Pads
- Additional Complete Frame Extension Assemblies
- Additional Hydraulic Vibrators
- Custom Curb Molds
- Hydraulic and Manual Curb Shut-off for Curb Molds
- Water Fogging Bar (for Watering Burlap)
- Additional 4 or 8 Port Vibrator Manifold
- Hydraulic Edge Slump Control
- Critical Spare Parts Package

DURABLE SIMPLICITY

CONCRETE is a product like no other

In the paving process, if something goes wrong, the crew only have a few minutes to make the necessary repairs.

With the most durable machines in the industry,
HEM Equipment repairs are rarely needed,
but if they are, parts are readily available and the
***average operator* is able to make repairs easily and in a timely manner**

DOWN TIME = \$\$

QUALITY



HEM uses the highest quality internationally supported components manufactured by Companies such as:



Hands on every step of
the way

with over 80 years combined experience



HEM IS THE ONLY MANUFACTURER IN THE WORLD WITH A COMPLETE FLEET OF:
CONCRETE PAVING MACHINES, FROM GRADE PREPARATION THROUGH PAVING, TEXTURING
AND JOINT SAWING.



- Slip Form Pavers
- Form Riding Pavers
- Placer Spreaders
- Two Track Placers
- Texture Cure
- Canal Pavers
- Trimmers
- MagnaCut
- Work Bridges

TRAINING & SERVICE



24 / 7 / 365
TECHNICAL
SUPPORT

INCLUDED

WHY



- STRUCTURAL DURABILITY
 - Over engineered at critical areas
- OPERATING SYSTEM RELIABILITY
 - Designed simplicity
- UNSURPASSED ECONOMY
 - Highest resale to purchase price ratio
 - Lowest annual operating costs

HEM is “Simply Great Machines”

HEM PAVING

SIMPLY GREAT MACHINES



WWW.HEMPAVING.COM

J. D. HONIGBERG INTERNATIONAL

+1-847-412-0200

www.jdhpowerequipment.com

155 N Pfingsten Rd. • Deerfield, IL 60015 • USA