



SOF® Seal P-Gasket

Bi-Cellular Foam Gasket

Flexible polyolefin foam made of a non-absorbing outer skin and a resilient interior network of both open and closed cells.

D E C E M B E R 2 0 1 4



Features

- Easy to apply
- Non-gassing
- Non-exuding
- Chemically inert
- Virtually dust-free
- Non-absorbing
- Meets all of the requirements of the 1990 Clean Air Act
- Is a “Domestic End Product” as defined in the Buy American Act, Title 41 USC 10

Description

TYPE: Engineered polymer foam gasket for use in construction.

FORM: Clean, Dry, Pre-formed Air Leak Gasket.

TEMPERATURE LIMITS: -45°F to +160°F.

Benefits

SOF Seal is an extruded, dry, pre-formed foam gasket made of a non-absorbing skin and a soft, highly resilient interior network of open and closed cells. SOF Seal is clean, free of scale, foreign matter, oil, or water. SOF Seal is economical and has a convenient nail fin for easy installation. It has low water vapor permeance and performs better than fiberglass if condensation is formed by moisture laden air leaking through wall cavities and joint openings.

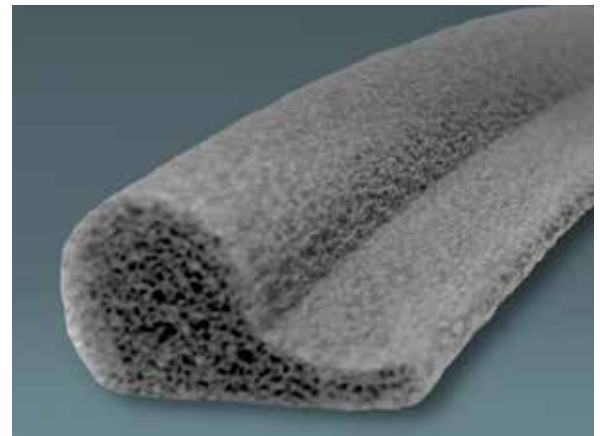
Applications

SOF Seal is commonly used between the marriage joint on factory built double-wide and modular home units, as well as log home joints. SOF Seal easily fills various sizes and shapes of openings in the marriage joint.

Storage

Store in a well ventilated area. Do not store products in direct sunlight. Keep away from heat sources and open flames.

Physical Properties		
Property	Value	ASTM Test Methods
Density lb/ft ³ (kg/m ³), avg.	1.8-2.5 (28-40)	D 1622
Permeability (perms)	< 65	E 96
Compression Recovery, %, min	> 96	D 5249
Compression Deflection psi (kPa)	1.6 (11.3)	D 5249
Tensile Strength psi (kPa)	26.4 (182)	D 3575
Water Absorption (g/cc)	< .03	C 1016 - Procedure B



Packaging Specifications - SOF Seal Gasket

Product	Unit	Roll Length	Unit Weight	Unit Dimension
2-1/4" (57 mm)	Carton	200' (61 m)	7 lbs (3 kg)	16" x 28" x 28"
2-1/4" (57 mm)	Spool	775' (236 m)	24 lbs (10.8 kg)	50" x 45" x 19"

Installation

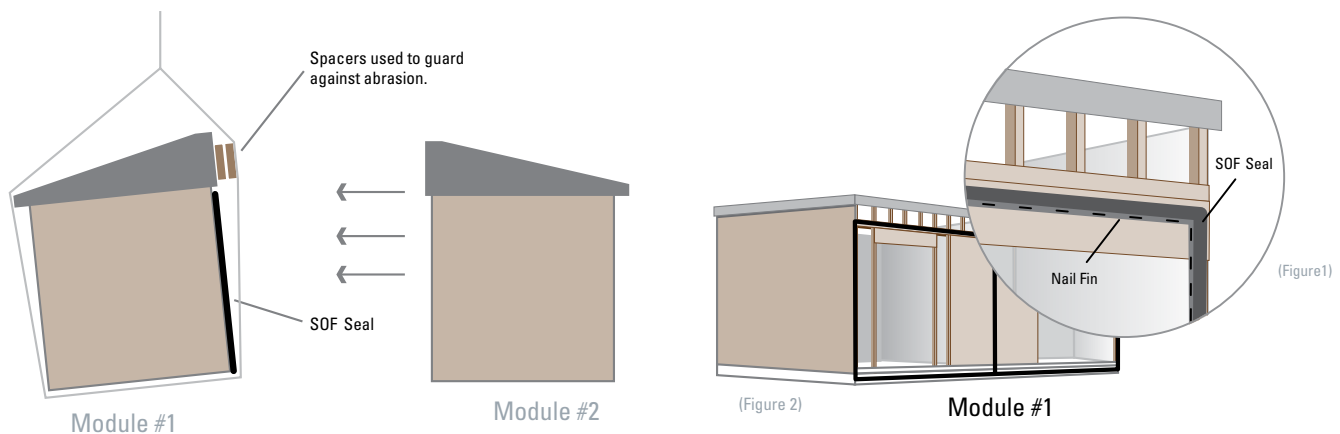
1. Set the first module according to required specifications.
2. Install SOF Seal around the entire perimeter of the module, up the exterior wall studs, along the center line of the top length of the marriage wall beam, and across the bottom girder. The staple fin can be installed up or down. (Figures 1 and 2)

SOF Seal should be adhered to the marriage wall every 8-12" on center, using the SOF Seal nail fin. Staples or nails may be used, as long as they hold the SOF Seal tight to the marriage wall without the crown penetrating or tearing the surface of the Seal.

3. Set the adjoining module, taking extra care not to tear the SOF Seal gasket*

Crane Assisted Set: If SOF Seal has been factory installed, to guard from winch line abrasion, place two 2"x4"x36" blocks at the top plate where the winch line will cross. Once the second module is lowered, remove the blocks and gently marry the modules together, without tearing the gasket.*

**Once the modules are married, wet spray foam may be used to fill any voids in the marriage wall.*



Distributed by: