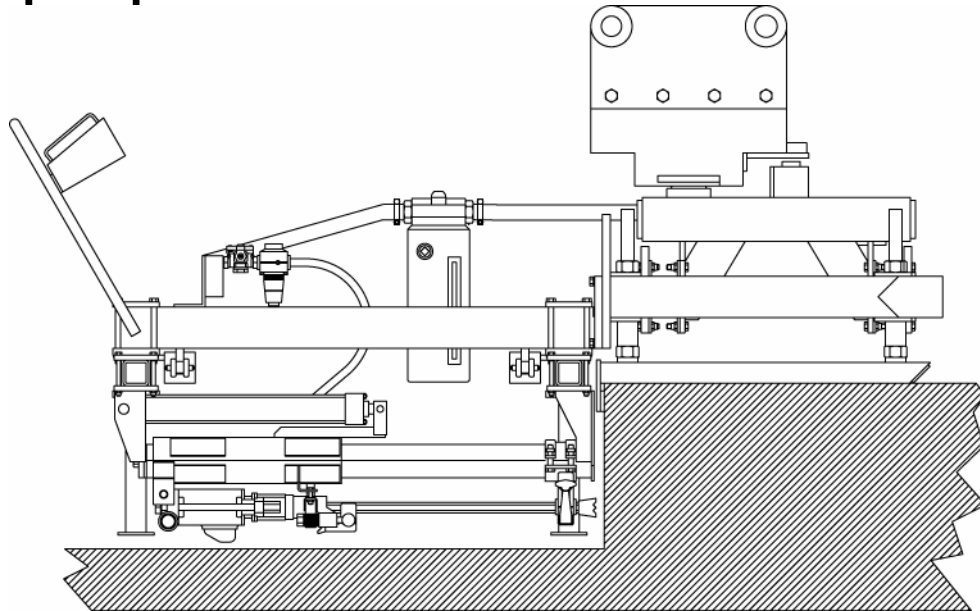


## H-2/H-6 Multiple Drill, Equipment Mounted Unit



Model	H-2/H-6
Drill Steel Shank	.875" x 4.25" (22.2mm x 107.9mm)
Drill Steel Length U.C.	24" (61.0cm)
Drill Bit Diameter	.625" – 2.50" (15.9mm to 63.5mm)
*Maximum Drill Depth	18" (45.7cm)
Drill Distance From Top of Slab	3" – 12" (7.6cm to 30.5cm)
Minimum Cutout Width	48" (121.9cm)
Weight H-2	1250lbs. (567.0kg)
Weight H-3	1500lbs. (680.4kg)
Weight H-4	1750lbs. (793.8kg)
Weight H-5	2000lbs. (907.2kg)
Weight H-6	2125lbs. (963.9kg)
<b>Hydraulic Requirements</b>	
GPM Required Per Drill	10 (37.9 l/min)
PSIG Required	2000 (13.8MPa)
<b>Air Requirements</b>	
SCFM Required Per Drill	15 (0.43 m <sup>3</sup> /min)
PSIG Required	90 (0.62MPa)

*Side shift is optional  
330 degree drill bed rotation  
Includes oil cooler  
Adjustable drill height, depth and centers  
Includes valving for most equipment with auxiliary circuit  
Backhoe or skid loader mounted  
Dust collection is available*

*Specifications shown are standard.  
Variations to the standard are available.  
\*Based on 2 piece steel and bits.  
Whirlybits should be 1" longer for maximum drilling depth.*