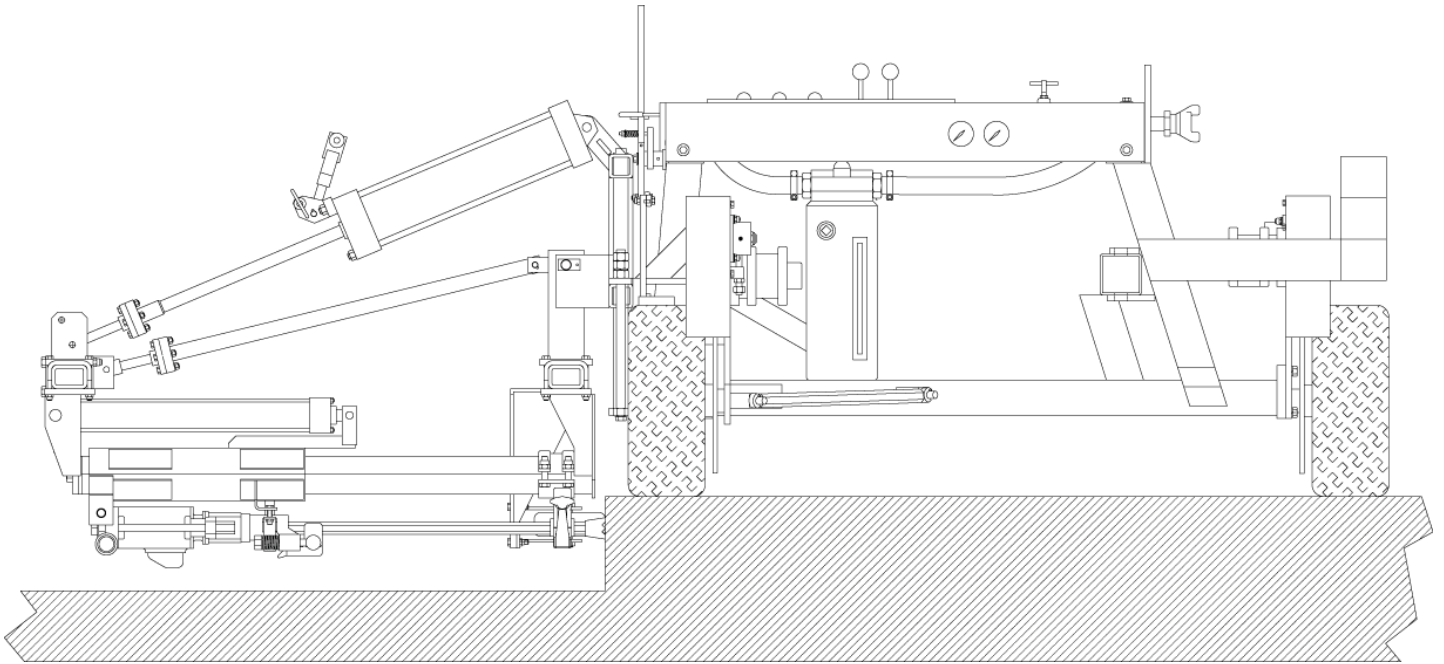


A-2SC/A-3SC Multiple Drill, Self Propelled On Slab Unit



Model	A-2SC/A-3SC
Drill Steel Shank	.875" x 4.25" (22.2mm x 107.9mm)
Drill Steel Length U.C.	24"(61.0cm)
Drill Bit Diameter	.625" – 2.50" (15.9mm to 63.5mm)
*Maximum Drill Depth	18" (45.7cm)
Drill Distance From Top of Slab	3.5" – 12" (8.9cm to 30.5cm)
Minimum Cutout Width	48" (121.9cm)
SCFM Required Per Drill	92.2 (2.61 m ³ /min)
PSIG Required	110 (0.76MPa)
Weight A-2SC (basic)	1985lbs. (900.4kg)
Weight A-3SC (basic)	2250lbs. (1021kg)

Horizontal and Vertical drilling
Skew drill bed is available on the A-2SC
On grade kit is available
Capable of towing air compressor
Crab steering
Paint marker
Solid rubber tires
Adjustable drill height, depth and centers
Auto control is available
Dust collection is available

Specifications shown are standard. Variations to the standard are available.

**Based on 2 piece steel and bits. Whirlybits should be 1" longer for maximum drilling depth.*