

## FS20 Flat Saw

### FS20 Flat Saw

The RGC® FS20 Flat Saw uses hydraulic direct drive power to maintain constant cutting speeds and torque without belts, pulleys, excessive noise or exhaust fumes. And because the FS20 operates in a closed hydraulic system it is virtually maintenance free.

The FS20 Flat Saw makes it possible to cut flush to a perpendicular surface making it ideal for wall corner cutting. Use the FS20 with the new Upright Handle attachment for easy wall cutting at the floor level. This set up is also the right choice for curb cutting.

Safely cut a variety of materials in confined spaces, damp environments and even underwater without risk of fumes or electrocution. Operate the FS20 Flat Saw from an RGC HydraPak or another compatible auxiliary power source with the addition of a Flow Divider.



**FS20 Flat Saw**

### Features & Benefits

- Cutting depth of up to 8 inches.
- Cuts flush to perpendicular surfaces, such as walls and curbs.
- Cut concrete, stone, brick, block, pipe, reinforced concrete, steel beams, and aggregates quickly and cleanly.
- Cuts vertically, horizontally and underwater.
- Heavy-duty hydraulic motor provides constant cutting speed under load.
- Modular frame design allows easy replacement of parts.
- Lightweight, rugged steel tube construction is lighter than gas saws.
- Dual function trigger for automatic wet cutting.
- Accepts abrasive\* or diamond blades.
- Use inside or outside with no exhaust pollutants.
- Heavy duty guard for flush cutting and a guard attachment for normal cutting are standard features.

\*Optional hub required.

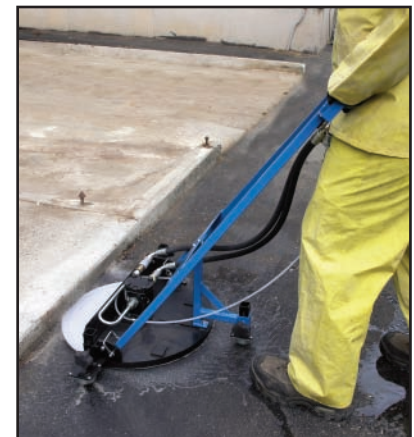
### FS20 Flat Saw Upright Handle Kit

The FS20 Upright Handle Kit is an upright attachment for the FS20 Flat Saw. Together they make easy work of cutting walls, curbs and other vertical structures at ground level.

The Upright Handle is constructed of rugged steel tubing and quickly attaches to the FS20 with simple hardware. Its adjustable ball transfers permit easy directional changes while cutting.

### Specifications

Model	FS20
Blade Size	20 in. (50.8 cm)
Cutting Depth	8 in. (20.3 cm)
Blade Speed (8 gpm)	1830 rpm
Blade Speed (10 gpm)	2400 rpm
Flow (maximum)	5 - 10 gpm (20 - 40 lpm)
Oil Pressure Range	2000 -2500 psi (138-172 bar)
Weight	38 lbs. (17.2 kg)



**FS20 Flat Saw with Upright Handle Kit**



P.O. Box 681 • Buffalo, NY • 14240-0681  
 Phone: (716) 895-1156 • Fax: (716) 895-1547  
**Toll Free: 800-RGC-TOOL (742-8665)**  
 Web: www.rgcproducts.com

RGC Construction Products Are Distributed By: