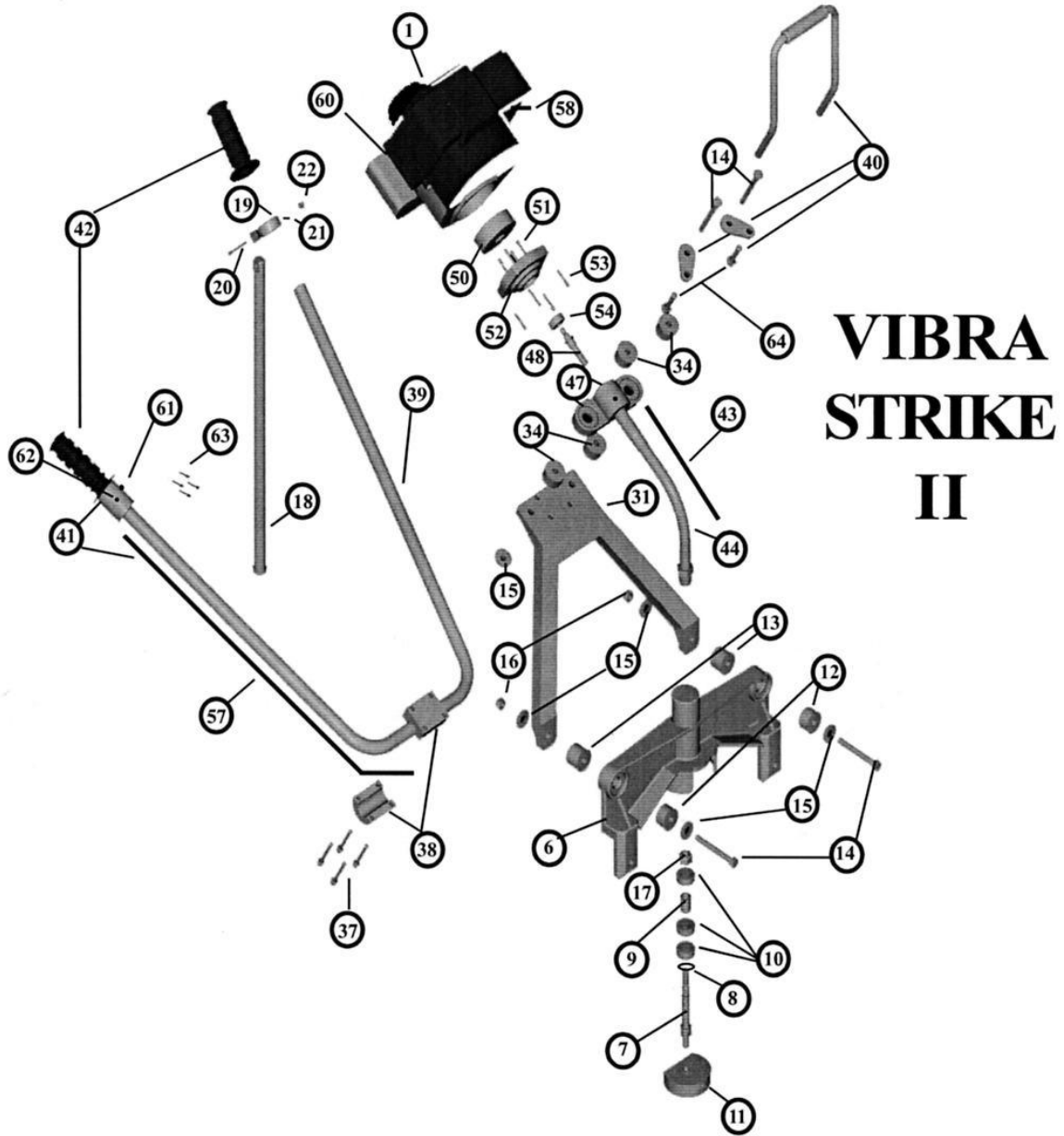


# Vibra Strike II Parts List



**J.D. Honigberg International, Inc.**  
650 Dundee Road, Suite 150, Northbrook, IL 60062 USA  
Tel: 847-412-0200 · Email: [powerequipment@jdhintl.com](mailto:powerequipment@jdhintl.com)  
[www.jdhpowerequipment.com](http://www.jdhpowerequipment.com)

## Vibra Strike II Parts List

Part #	Part Name	Item #	Part #	Part Name	Item #
TL001	3 1/2 x 7/16 Bolt	14	TL053	Spacer	9
TL006	Dual Handle Bar Connector Screws	37	TL054	Honda Cable Adjustment Screw	58
TL009	Screws for Lift Handle	64	TL057	Honda Engine Mounting Screws	53
TL010	7/16 x 1 1/2 Flat Washer	15	TL070	3/8" Set Screw	21
TL012	4 Stroke Engine Adapter Set Screw	62	TL071	Honda Adapter Mounting Screws	51
TL030	3/4 Rubber Bushing Front	12	TL072	1 1/2" Screw	20
TL031	1" Rubber Bushing Back	13	TL080	Kickstand Bracket Complete	19,20,21,22
TL032	Frame Connector Bushings	34		1 TL072, 1 TL081, 1 TL070, 1 TL043	
TL035	Frame Connector Bushing Set	14,15,16,34	TL081	Kickstand Bracket	19
	2 TL001, 2 TL010, 4 TL032, 2 TL040		TL110	Magnesium Frame	31
TL038	SHCS 10-24 x 1"	63	TL140	Magnesium Frame Complete	14,15,16,34
TL040	7/16" Nut	16		1 TL035, 1 TL110, 1 TL311	
TL042	9/16" Nut	17	TL200	Cast Housing w/Sleeve	6
TL043	#10 Self Locking Nut	22	TL250	Cast Housing Complete	6-17
TL050	Snap Ring	8		1 TL200, 1 TL299, 2 TL030, 2 TL031	
TL051	Shaft	7	TL299	Eccentric Weight Kit	7-11
TL052	Bearings	10		1 TL050, 1 TL051, 3 TL052, 1 TL053, 1 TL300	
TL300	Eccentric Weight	11	TL322	Throttle Cable for Honda Engine	57
TL302	Dual Handle Bar Connector	38	TL324	Honda Clutch Complete	48,50-54
TL303	Dual Handle Bar	39		Includes TL319, TL316	
TL304	Lift Handle for VSII	40	TL326	Honda Exhaust Deflector with Screw	60
	Includes 2 tear drops, 2 TL009		TL328	Honda Throttle Complete	57, 62,63
TL306	Grips	42		Includes 1 TL322	
TL307	Honda Engine Drive Cable	43	TL329	Honda Clutch Bearing	54
TL308	Honda Engine Flex Hose	44	TL330	Throttle Thumb Screw	61
TL309	Screws for Lift Handle		TL605	Toggle Switch	not shown
TL311	Honda Engine Frame Connector	47	TL800	Kickstand	18
	Includes TL044 (SSS 5/16-18 x 5/16")		TL850	Kickstand Complete	18-22
TL316	Honda Clutch Drum	50		1 TL800, 1 TL081, 1 TL072, 1 TL070	
TL317	Honda Engine Adapter	52	EA900H	Honda 4 Stroke Engine w/o Clutch	1
TL319	Honda Clutch Shaft	48	EA900H/C	Honda 4 Stroke Engine w/Clutch	1

***J.D. Honigberg International, Inc.***

85 Revere Drive, Suite D

Northbrook, IL 60062

Tel: (847) 412-0200 fax: (847) 412-0034

[info@jdhintl.com](mailto:info@jdhintl.com)

<http://www.jdhpowerequipment.com/>