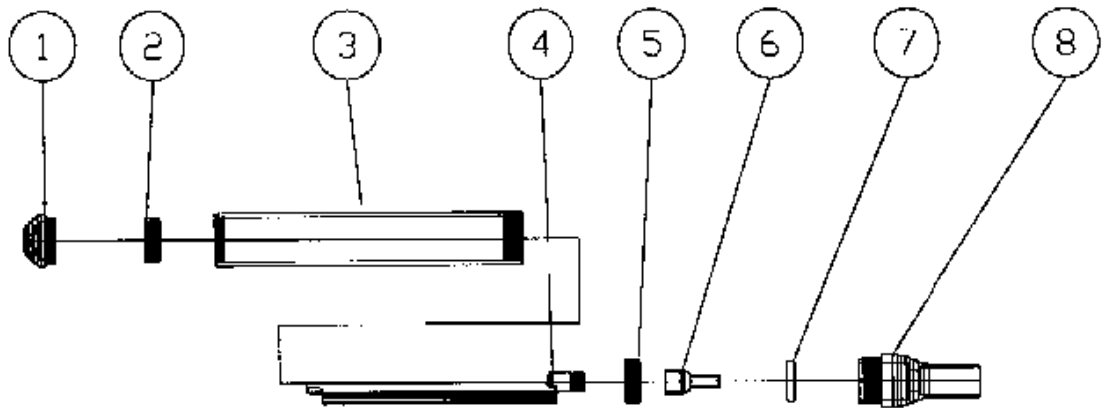


Rattler Parts List



Rattler Vibrator Head Assembly



J.D. Honigberg International, Inc.

650 Dundee Road, Suite 150, Northbrook, IL 60062 USA

Tel: 847-412-0200 · Email: powerequipment@jdhintl.com

www.jdhpowerequipment.com

Rattler Parts List

Part #	Part Name	Qty.	Part #
EA900HC	Honda 4 Stroke Engine w/clutch	1	1
EA900H	Honda 4 Stroke Engine	1	1
RT600	Throttle Assembly	1	2
RL500*	Rattler Flex Hose	1	3
RL550*	Rattler Drive Cable	1	4
RL250	Rattler Vibrator Head Assembly	1	5
TL650	Shoulder Strap Assembly	1	6

*Rattler flex hose and drive cable can be cut to specified length

Rattler Whip:

This includes part# 3,4, &5.

Part#	Description
RL3** - RL3**	4' - 14' Rattler Whip

Rattler Vibrator Head Assembly

Part#	Part Name	Item#
RL0015	End Cap	1
RL0025	6003RS Bearing	2
RL0035	Vibrator Shaft Housing	3
RL0045	Vibrator Shaft	4
RL0065	Flex Shaft Connector	6
RL0075	Seal	7
RL0085	Flex Shaft Housing Connector	8
RL250	Vibrator Assembly Complete	1-8
TL052	Vibrator Shaft 202 Bearing	5

Rattler Hose and Cable Lengths

The hose length will help to determine the Rattler Length that you have. When ordering the Rattler Hose and Cable please specify the engine *Honda or Robin* and hose size Example: You measure your hose and find that it is 25.25 inches when assembled. This means you have a 4' Honda Rattler. When measuring your Rattler hose when assembled, the length of the hose will be about 3 inches shorter than the hose lengths above.

J.D. Honigberg International, Inc.

85 Revere Drive, Suite D

Northbrook, IL 60062

Tel: (847) 412-0200 fax: (847) 412-0034

info@jdhintl.com

<http://www.jdhpowerequipment.com/>